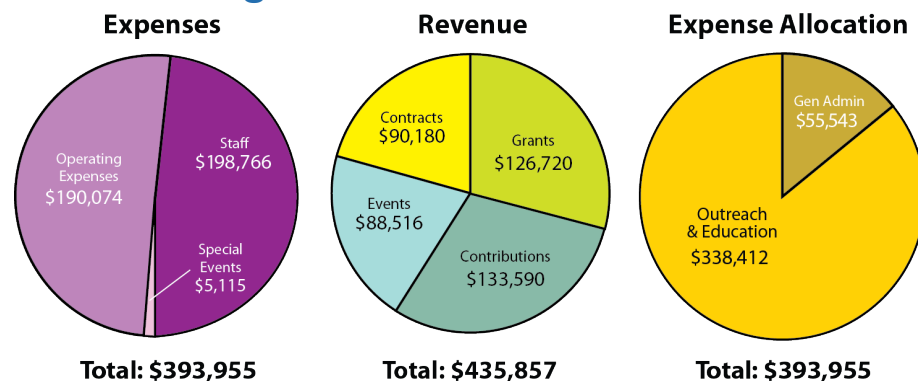


Our Mission

The mission and values of NAMI Santa Clara County is to help people with a lived experience of mental illness and families by providing support, education and advocacy; to promote research; to reduce stigma and discrimination in the community; and to improve services by working with health professionals and families.

2014 Budget



Significant Statistics

- Population served: Santa Clara County
- Staff: 6 FTE (68 Staff, Teachers & Presenters)
- Total 2014 Operating Budget: \$393,955
- Clients: 9,000
- Volunteers: 185; Volunteer Hours: 25,000
- Value of Volunteer Hours: \$500,000

Programs and Services

Education & Support Programs

Family-to-Family Education Program — 12-week course designed for family members who have a loved one with mental illness (offered in English, Spanish, Mandarin and Korean). 15 Classes/Yr.

NAMI Basics Program — 6-week course designed for parents and caregivers of minors who have a mental illness. 2 Classes/Yr.

Peer-to-Peer Program — 10-week experiential education course focusing on recovery, for persons 18 and over. (offered in English and Spanish). 8 Classes/Yr.

Provider Education Program — 5-week course for professionals who work with persons having a mental illness and/or their families or loved ones. 7 Classes/Yr.

Peer PALS Program (Peer Associate Leadership & Support) — Matches trained PAL, or mentor, with someone with like interests & of similar age who is in need of support from isolation due to mental illness. Matched pairs engage in weekly talks and activities. 33 Matches/Yr.

NAMI Faith Net — Informational resource for faith communities, NAMI members and community partners.

Support Groups — Provide a safe place for individuals to share concerns about their loved ones living with a mental illness (offered in English, Spanish, Mandarin, Chinese and Korean). 192 Groups/Yr.

Connections Recovery Support Group — Provides support for adults living with mental illness through sharing issues & coping skills. 52/Yr.

NAMI on Campus — Extension of NAMI's mission into the campus community with student-led clubs that tackle mental health issues. Offered at Santa Clara University and West Valley Community College.

Outreach

Legislative Initiatives — The NAMI Santa Clara County Legislative Committee actively monitors and advocates for favorable mental health legislation and quality treatment on all levels of government.

Media Liaison — NAMI Santa Clara County works with local media to provide impartial, objective reporting on issues affecting individuals living with mental illness, their families and the community. As consumers of private/public mental health services, our members are familiar with what is/is not working, as well as what services are needed in the community.

Crisis Intervention Team (CIT) — Police officers & dispatchers of the Crisis Intervention Team (CIT) are trained to interact with individuals living with mental illness in the community. The program is designed to minimize use of force, increase officer/public safety & explain available resources in community policing. NAMI Santa Clara County assists in the training of the police officers. 5 Trainings/Yr.

NAMI SCC Warmline Help Desk & Community Resource Center — Experienced Warmline volunteers offer support, information and referrals via phone, email or walk-in. Also available at our office (1150 S. Bascom Ave, San Jose) are a mental health resource library and free printed mental health and community resource materials. The office is open 10 am-2 pm, M-F (except holidays). Warmline & Resource Center are staffed and available 8,500 hours/Yr.

Support for Other Languages — Daytime and evening telephone support is provided in Spanish and Mandarin by experienced volunteers, and various education classes and support groups are offered in Spanish, Mandarin, Cantonese and Korean.

Presentations

In Our Own Voice — 182/Yr. Presentations throughout the community by trained individuals living with mental illness.

Ending the Silence — Presented to high school students to learn about mental illness.

Parents and Teachers as Allies — 2-hour in-service program for school professionals to help them better understand early warning signs of mental illnesses in children and adolescents.

Other Services

General Meetings — 9/Yr. Informative monthly meetings with presentations on rehabilitation, housing, mental health services, estate planning and legal issues. Open to public.

Newsletters — 10 newsletters per year provide information about activities, educational programs, support groups and services. As a portion of a member's annual dues is forwarded to NAMI National and NAMI California, members also receive newsletters from those NAMI organizations.

VA Kiosks — A collaboration between NAMI Santa Clara County and the Veterans Administration that provides kiosks with video and print materials about mental illness in hospitals and on college campuses. 6 Locations.

Speakers Bureau — Experienced volunteers discuss mental illness at schools, colleges, hospitals, public institutions and community organizations. 200 Presentations/Yr.