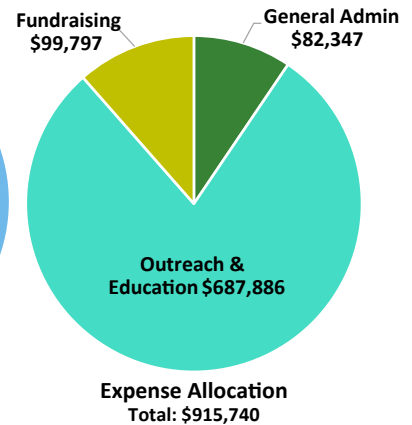
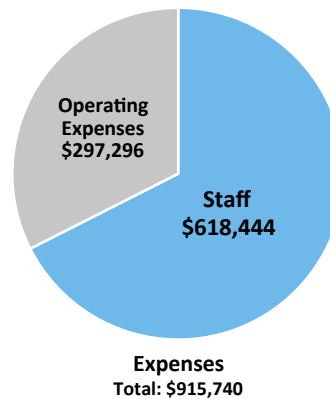
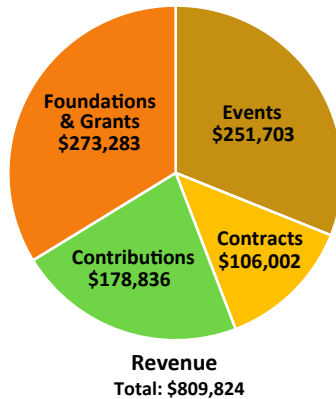


## Our Mission

The mission and values of NAMI-Santa Clara County are to help people with a lived experience of mental illness and families by providing support, education and advocacy; to promote research; to reduce stigma and discrimination in the community; and to improve services by working with health professionals and families.

## 2018 Budget



## Significant Statistics

- Population served: Santa Clara County
- Staff: 14 FTE (100 Staff, Teachers & Presenters)
- Total 2018 Operating Budget: \$915,740
- Clients: 9,800
- Volunteers: 225; Volunteer Hours: 29,000
- Value of Volunteer Hours: \$580,000

## Programs and Services

### Education & Support Programs

**Family-to-Family Education Program** — 12-week course for family members with a loved one with mental illness (offered in English, Spanish, Mandarin and Korean). 17 Classes/Yr.

**NAMI Basics Program** — 6-week course designed for parents & caregivers of minors who have a mental illness. 3 Classes/Yr.

**Peer-to-Peer Program** — 10-week experiential education course focusing on recovery for persons 18 and over (offered in English and Spanish). 9 Classes/Yr.

**Provider Education Program** — 5-week course for professionals who work with persons living with mental illness and/or their families. 7 Classes/Yr.

**Peer PALS Program** (Peer Associate Leadership Support) — Matches trained PAL with someone with like interests & who is in need of support from isolation. Matched pairs engage in weekly talks and activities. 40 Matches/Yr.

**Mentors on Discharge** — Matches trained Peer Mentor with person in a hospital/outpatient program in need of support & resources to transition into the community. 100 Matches/Yr.

**NAMI FaithNet** — Informational resource for faith communities, NAMI members and community partners. 12 Presentations/Yr.

**Support Groups** — Provide a safe place for individuals to share concerns about their loved ones living with a mental illness (offered in English, Spanish, Mandarin, Chinese and Korean). 192 Groups/Yr.

**Connections Recovery Support Group** — Provides support for adults living with mental illness through sharing issues & coping skills. 52/Yr.

**NAMI on Campus** — Extension of NAMI's mission into the campus community w/student-led clubs that tackle mental health issues.

### Outreach

**Legislative Initiatives** — The NAMI Santa Clara County Legislative Committee actively monitors and advocates for favorable mental health legislation and quality treatment on all levels of government.

**Media Liaison** — NAMI-Santa Clara County works with local media to provide impartial, objective reporting on issues affecting individuals living with mental illness, their families and the community.

**Crisis Intervention Team (CIT)** — Police officers & dispatchers of the Crisis Intervention Team are trained to interact with individuals living with mental illness in the community. The program is designed to minimize use of force, increase officer/public safety & explain available resources in community policing. 5 Trainings/Yr.

**NAMI SCC Warmline Help Desk & Community Resource Center** Experienced Warmline volunteers/staff with lived experience offer support, information and referrals via phone, email or walk-ins, a mental health resource library and resource materials are provided. The office is open 10 am-6 pm, M-F (except holidays). Expanded hours started July 2018.

### Presentations

**In Our Own Voice** — Presentations throughout the community by trained individuals living with mental illness. 200/Yr.

**Ending the Silence** — Presented to high school students to learn about mental illness. 25/Yr.

### Other Services

**General Meetings** — Informative monthly meetings with presentations on rehabilitation, housing, mental health services, estate planning and legal issues. Open to public. 9 Meetings/Yr.

**Newsletter & Resource Guide** — Provide information about activities, educational programs, support groups and services. 10 Newsletters/Yr. Resource Guide updated regularly.

**VA Kiosks** — A collaboration between NAMI-Santa Clara County and the Veterans Administration that provides kiosks with video and print materials about mental illness. 6 Locations in hospitals and on college campuses.

**Outreach Events/Speakers Bureau** — Experienced volunteers staff resource tables and discuss mental illness at schools, colleges, hospitals, public institutions and community organizations. 240/Yr.